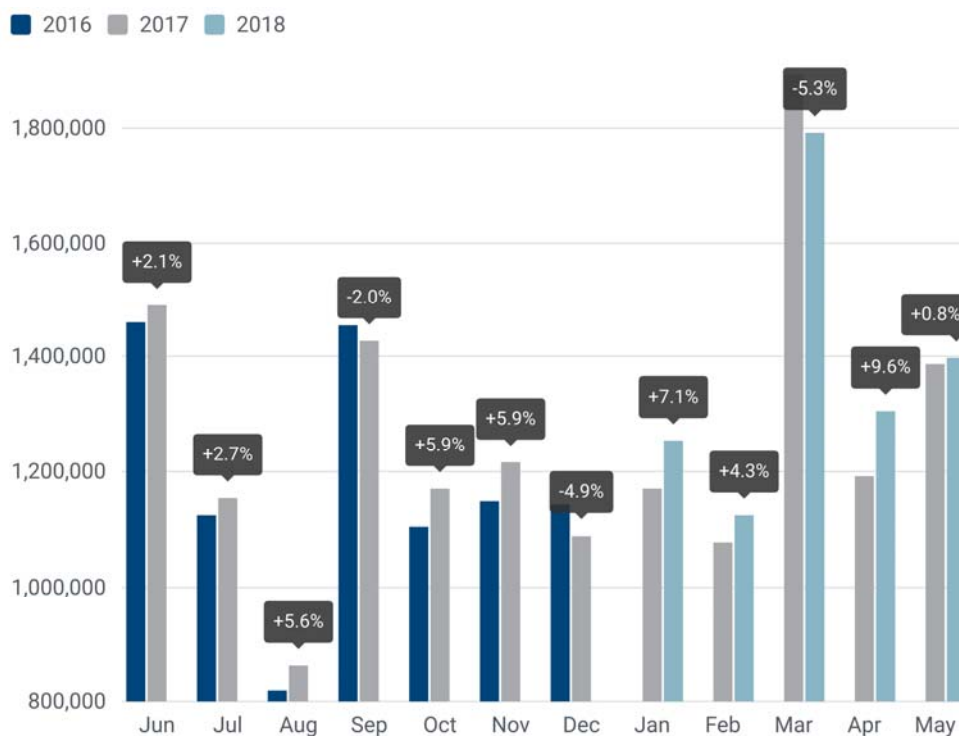


PRESS EMBARGO: 8.00 AM (6.00 AM GMT), 15 June 2018

NEW PASSENGER CAR REGISTRATIONS EUROPEAN UNION¹



Passenger car registrations: +2.4% five months into 2018; +0.8% in May

In May 2018, the EU passenger car market flattened out after showing robust growth in April. Registrations of new cars were only 0.8% higher than in May 2017, counting 1,398,913 units in total. Results were diverse among the major EU markets, with Spain (+7.2%) and the United Kingdom (+3.4%) posting growth, while Germany (-5.8%) and Italy (-2.8%) saw their demand for cars decline in May.

From January to May 2018, demand for new cars in the European Union remained positive, largely sustained by the strong performance of the new EU member states, where registrations went up by 11.6% so far this year. Overall, 6,879,885 new passenger cars were registered in the EU during the first five months of 2018, or 2.4% more than one year ago. Car registrations increased in Spain (+10.6%), France (+3.5%) and Germany (+2.6%), although demand contracted in the United Kingdom (-6.8%).

¹ Data for Malta not available on a monthly basis

P R E S S R E L E A S E

PRESS EMBARGO FOR ALL DATA:
8.00 AM (6.00 AM GMT), 15 June 2018

PROVISIONAL

NEW PASSENGER CAR REGISTRATIONS BY MARKET EUROPEAN UNION¹

15/06/2018

	May '18	May '17	%Change 18/17	Jan - May '18	Jan - May '17	%Change 18/17
AUSTRIA	32,551	32,426	+0.4	154,846	151,120	+2.5
BELGIUM	54,999	51,342	+7.1	275,158	267,183	+3.0
BULGARIA	3,308	2,457	+34.6	14,496	11,543	+25.6
CROATIA	8,762	8,122	+7.9	29,702	25,187	+17.9
CYPRUS	1,231	1,242	-0.9	6,478	5,970	+8.5
CZECH REPUBLIC	25,720	27,009	-4.8	117,852	117,817	+0.03
DENMARK	22,560	22,300	+1.2	98,235	99,833	-1.6
ESTONIA	2,568	2,523	+1.8	11,624	10,472	+11.0
FINLAND	12,482	11,058	+12.9	57,944	53,583	+8.1
FRANCE	191,702	191,416	+0.1	935,934	904,341	+3.5
GERMANY	305,057	323,952	-5.8	1,497,723	1,459,333	+2.6
GREECE	12,467	10,666	+16.9	49,741	40,215	+23.7
HUNGARY	12,871	10,956	+17.5	56,542	43,984	+28.6
IRELAND	6,070	5,992	+1.3	85,913	89,815	-4.3
ITALY	199,113	204,807	-2.8	945,677	948,938	-0.3
LATVIA	1,692	1,542	+9.7	7,342	7,023	+4.5
LITHUANIA ⁴	3,129	2,359	+32.6	12,736	10,137	+25.6
LUXEMBOURG	5,361	5,535	-3.1	25,028	23,740	+5.4
NETHERLANDS	36,952	36,310	+1.8	206,506	185,190	+11.5
POLAND	42,354	39,716	+6.6	226,955	205,124	+10.6
PORTUGAL	23,576	23,653	-0.3	108,286	102,352	+5.8
ROMANIA	11,555	8,062	+43.3	47,827	36,978	+29.3
SLOVAKIA	9,674	9,217	+5.0	42,424	39,303	+7.9
SLOVENIA	7,301	6,786	+7.6	34,299	31,477	+9.0
SPAIN	135,522	126,411	+7.2	592,269	535,697	+10.6
SWEDEN	37,687	35,326	+6.7	159,299	155,206	+2.6
UNITED KINGDOM	192,649	186,265	+3.4	1,079,049	1,158,357	-6.8
EUROPEAN UNION	1,398,913	1,387,450	+0.8	6,879,885	6,719,918	+2.4
EU15 ²	1,268,748	1,267,459	+0.1	6,271,608	6,174,903	+1.6
EU12 ³	130,165	119,991	+8.5	608,277	545,015	+11.6
ICELAND ⁴	2,858	3,849	-25.7	9,285	10,556	-12.0
NORWAY	13,046	14,175	-8.0	60,900	63,755	-4.5
SWITZERLAND	27,826	28,411	-2.1	126,434	126,995	-0.4
EFTA	43,730	46,435	-5.8	196,619	201,306	-2.3
EU + EFTA	1,442,643	1,433,885	+0.6	7,076,504	6,921,224	+2.2
EU15 + EFTA	1,312,478	1,313,894	-0.1	6,468,227	6,376,209	+1.4

SOURCE: NATIONAL AUTOMOBILE MANUFACTURERS' ASSOCIATIONS

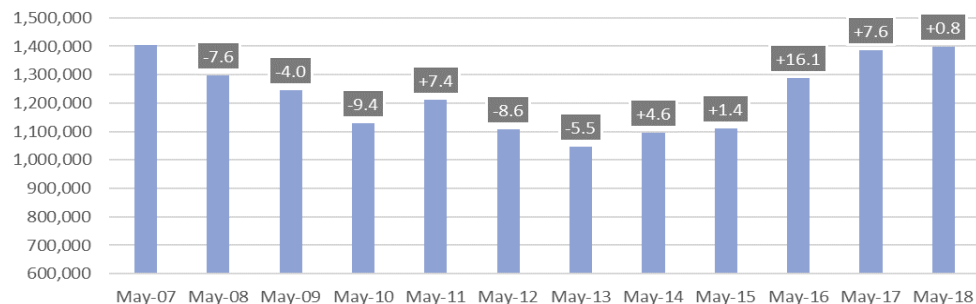
¹ Data for Malta n.a.

³ Member States having joined the EU since 2004

² Member States before the 2004 enlargement

⁴ Estimates

New passenger car registrations in the EU - month trend | 2007-2018



For further information, please contact: Francesca Piazza - Statistics Manager - E-mail: fp@acea.be

 Next press release: **Tuesday 17 July 2018**

 This information is available on the ACEA website: <http://www.acea.be>

PRESS RELEASE

PROVISIONAL

NEW PASSENGER CAR REGISTRATIONS BY MANUFACTURER¹

EUROPEAN UNION (EU)

15/06/2018

	May					January - May				
	%Share ²		Units	Units	%Change	%Share ²		Units	Units	%Change
	'18	'17	'18	'17	18/17	'18	'17	'18	'17	18/17
VW Group	25.1	24.3	350,894	336,677	+4.2	24.3	23.3	1,673,445	1,567,330	+6.8
VOLKSWAGEN	11.9	11.3	166,832	156,996	+6.3	11.3	10.8	778,632	722,479	+7.8
AUDI	5.0	5.3	69,806	73,597	-5.2	5.0	5.3	344,275	355,259	-3.1
SKODA	4.6	4.7	63,824	64,758	-1.4	4.6	4.3	314,820	289,056	+8.9
SEAT	3.0	2.4	42,460	33,789	+25.7	2.9	2.5	200,036	167,260	+19.6
PORSCHE	0.5	0.5	7,636	7,145	+6.9	0.5	0.5	33,835	31,232	+8.3
OTHERS ³	0.0	0.0	336	392	-14.3	0.0	0.0	1,847	2,044	-9.6
PSA Group	16.0	10.2	223,582	141,550	+58.0	16.3	10.1	1,123,518	680,887	+65.0
PEUGEOT	6.1	6.0	85,769	82,980	+3.4	6.4	6.0	437,426	400,062	+9.3
OPEL/VAUXHALL ⁴	5.7	0.0	80,304			5.8	0.0	397,810		
CITROEN	3.8	3.9	53,086	54,786	-3.1	3.9	3.9	267,803	260,614	+2.8
DS	0.3	0.3	4,423	3,784	+16.9	0.3	0.3	20,479	20,211	+1.3
RENAULT Group	11.6	11.0	161,672	151,996	+6.4	10.4	10.1	713,866	679,583	+5.0
RENAULT	7.7	7.6	107,960	105,016	+2.8	7.1	7.2	485,455	485,214	+0.05
DACIA	3.8	3.4	53,074	46,513	+14.1	3.3	2.9	225,861	192,376	+17.4
LADA	0.0	0.0	476	467	+1.9	0.0	0.0	2,185	1,993	+9.6
ALPINE	0.0	0.0	162	0		0.0	0.0	365	0	
FCA Group	7.7	7.8	108,096	108,136	-0.04	7.0	7.4	483,552	494,806	-2.3
FIAT	5.4	6.1	75,827	85,321	-11.1	5.0	5.6	344,359	378,781	-9.1
JEEP	1.3	0.6	17,916	8,848	+102.5	1.0	0.6	71,979	43,163	+66.8
ALFA ROMEO	0.6	0.6	8,674	7,825	+10.8	0.6	0.5	40,105	35,673	+12.4
LANCIA/CHRYSLER	0.4	0.4	5,071	5,362	-5.4	0.3	0.5	23,234	32,855	-29.3
OTHERS ⁵	0.0	0.1	608	780	-22.1	0.1	0.1	3,875	4,334	-10.6
FORD	6.3	6.3	87,866	87,545	+0.4	6.8	7.0	464,818	469,470	-1.0
BMW Group	5.8	6.2	81,205	86,360	-6.0	6.0	6.3	413,109	423,214	-2.4
BMW	4.5	4.9	62,956	68,271	-7.8	4.7	5.1	326,265	339,503	-3.9
MINI	1.3	1.3	18,249	18,089	+0.9	1.3	1.2	86,844	83,711	+3.7
DAIMLER	5.9	6.3	82,688	87,314	-5.3	5.9	6.1	403,050	406,961	-1.0
MERCEDES	5.3	5.6	73,549	77,983	-5.7	5.3	5.4	362,536	364,768	-0.6
SMART	0.7	0.7	9,139	9,331	-2.1	0.6	0.6	40,514	42,193	-4.0
TOYOTA Group	4.5	4.3	63,322	60,203	+5.2	4.8	4.6	327,860	311,578	+5.2
TOYOTA	4.2	4.1	59,337	56,899	+4.3	4.5	4.4	308,019	293,613	+4.9
LEXUS	0.3	0.2	3,985	3,304	+20.6	0.3	0.3	19,841	17,965	+10.4
HYUNDAI	3.3	3.3	46,652	45,256	+3.1	3.4	3.2	232,691	215,022	+8.2
NISSAN	2.8	3.4	38,970	46,617	-16.4	3.4	3.8	230,553	255,692	-9.8
KIA	3.0	2.9	41,927	40,415	+3.7	3.1	3.0	213,151	203,362	+4.8
VOLVO CAR CORP.	1.8	1.8	24,562	24,874	-1.3	1.8	1.8	125,383	123,049	+1.9
JAGUAR LAND ROVER Group	1.2	1.1	16,581	15,777	+5.1	1.3	1.5	91,855	102,299	-10.2
LAND ROVER	0.7	0.8	10,162	10,657	-4.6	0.9	1.0	58,522	69,040	-15.2
JAGUAR	0.5	0.4	6,419	5,120	+25.4	0.5	0.5	33,333	33,259	+0.2
HONDA	0.8	0.7	10,706	9,950	+7.6	0.9	0.9	63,974	61,713	+3.7
GM⁴	0.0	5.9	93	84,817	-99.9	0.0	6.2	985	426,777	-99.8

SOURCE: ACEA MEMBERS

¹ Includes data for ACEA members

² ACEA estimation based on total by market

³ Includes Bentley, Lamborghini and Bugatti

⁴ Following PSA acquisition of the Opel and Vauxhall brands, as of 1 August 2017 Opel/Vauxhall registrations are accounted in the PSA Group

⁵ Includes Dodge and Maserati

NEW PASSENGER CAR REGISTRATIONS BY MANUFACTURER¹

EU + EFTA Countries

15/06/2018

	May					January - May				
	%Share ²		Units	Units	%Change	%Share ²		Units	Units	%Change
	'18	'17	'18	'17	18/17	'18	'17	'18	'17	18/17
VW Group	25.2	24.4	363,117	350,096	+3.7	24.4	23.4	1,723,938	1,621,612	+6.3
VOLKSWAGEN	11.9	11.4	172,356	163,022	+5.7	11.3	10.8	800,214	746,293	+7.2
AUDI	5.0	5.3	72,140	76,139	-5.3	5.0	5.3	354,021	365,971	-3.3
SKODA	4.6	4.7	66,539	68,027	-2.2	4.6	4.4	326,452	301,500	+8.3
SEAT	3.0	2.4	43,646	34,820	+25.3	2.9	2.5	205,358	172,303	+19.2
PORSCHE	0.6	0.5	8,076	7,665	+5.4	0.5	0.5	35,912	33,335	+7.7
OTHERS ³	0.0	0.0	360	423	-14.9	0.0	0.0	1,981	2,210	-10.4
PSA Group	15.8	10.0	227,345	144,046	+57.8	16.1	10.0	1,140,764	691,847	+64.9
PEUGEOT	6.0	5.9	87,245	84,514	+3.2	6.3	5.9	444,096	406,788	+9.2
OPEL/VAUXHALL ⁴	5.7	0.0	81,752			5.7	0.0	404,237		
CITROEN	3.7	3.9	53,835	55,669	-3.3	3.8	3.8	271,607	264,483	+2.7
DS	0.3	0.3	4,513	3,863	+16.8	0.3	0.3	20,824	20,576	+1.2
RENAULT Group	11.4	10.8	164,424	154,344	+6.5	10.3	10.0	725,422	690,578	+5.0
RENAULT	7.6	7.4	109,739	106,495	+3.0	7.0	7.1	492,975	492,444	+0.1
DACIA	3.7	3.3	54,018	47,381	+14.0	3.2	2.8	229,850	196,135	+17.2
LADA	0.0	0.0	476	468	+1.7	0.0	0.0	2,186	1,999	+9.4
ALPINE	0.0	0.0	191	0				411	0	
FCA Group	7.6	7.7	110,120	109,940	+0.2	6.9	7.3	491,738	502,569	-2.2
FIAT	5.3	6.0	76,711	86,327	-11.1	4.9	5.5	348,359	383,247	-9.1
JEEP	1.3	0.6	18,487	9,183	+101.3	1.0	0.6	74,064	44,514	+66.4
ALFA ROMEO	0.6	0.6	9,181	8,180	+12.2	0.6	0.5	41,847	37,064	+12.9
LANCIA/CHRYSLER	0.4	0.4	5,071	5,362	-5.4	0.3	0.5	23,236	32,858	-29.3
OTHERS ⁵	0.0	0.1	670	888	-24.5	0.1	0.1	4,232	4,886	-13.4
FORD	6.2	6.2	89,715	89,280	+0.5	6.7	6.9	473,419	477,572	-0.9
BMW Group	5.9	6.3	85,017	90,471	-6.0	6.1	6.4	431,505	441,378	-2.2
BMW	4.6	5.0	66,202	71,724	-7.7	4.8	5.1	341,747	355,133	-3.8
MINI	1.3	1.3	18,815	18,747	+0.4	1.3	1.2	89,758	86,245	+4.1
DAIMLER	6.0	6.4	85,901	91,066	-5.7	5.9	6.1	418,467	423,458	-1.2
MERCEDES	5.3	5.7	76,528	81,529	-6.1	5.3	5.5	377,052	380,243	-0.8
SMART	0.6	0.7	9,373	9,537	-1.7	0.6	0.6	41,415	43,215	-4.2
TOYOTA Group	4.6	4.5	66,496	63,835	+4.2	4.8	4.7	340,544	326,485	+4.3
TOYOTA	4.3	4.2	62,377	60,430	+3.2	4.5	4.4	320,101	307,889	+4.0
LEXUS	0.3	0.2	4,119	3,405	+21.0	0.3	0.3	20,443	18,596	+9.9
NISSAN	2.8	3.3	40,274	47,798	-15.7	3.4	3.8	238,700	262,542	-9.1
HYUNDAI	3.3	3.3	47,880	46,791	+2.3	3.4	3.2	238,607	221,205	+7.9
KIA	3.0	2.9	42,956	41,527	+3.4	3.1	3.0	217,348	207,793	+4.6
VOLVO CAR CORP.	1.8	1.8	26,103	26,438	-1.3	1.9	1.9	134,046	131,239	+2.1
JAGUAR LAND ROVER Group	1.2	1.1	17,090	16,162	+5.7	1.3	1.5	94,379	104,437	-9.6
LAND ROVER	0.7	0.8	10,475	10,956	-4.4	0.9	1.0	60,160	70,557	-14.7
JAGUAR	0.5	0.4	6,615	5,206	+27.1	0.5	0.5	34,219	33,880	+1.0
HONDA	0.8	0.7	11,088	10,537	+5.2	0.9	0.9	66,395	64,227	+3.4
GM⁴	0.0	6.0	136	86,438	-99.8	0.0	6.3	1,157	433,983	-99.7

SOURCE: ACEA MEMBERS

¹ Includes data for ACEA members

² ACEA estimation based on total by market

³ Includes Bentley, Lamborghini and Bugatti

⁴ Following PSA acquisition of the Opel and Vauxhall brands, as of 1 August 2017 Opel/Vauxhall registrations are accounted in the PSA Group

⁵ Includes Dodge and Maserati

PRESS RELEASE PROVISIONAL

NEW PASSENGER CAR REGISTRATIONS BY MANUFACTURER¹ WESTERN EUROPE (EU15 + EFTA Countries)

15/06/2018

	May					January - May				
	%Share ²		Units	Units	%Change	%Share ²		Units	Units	%Change
	'18	'17	'18	'17	18/17	'18	'17	'18	'17	18/17
VW Group	24.7	23.7	324,313	311,577	+4.1	23.8	22.7	1,537,012	1,450,057	+6.0
VOLKSWAGEN	12.1	11.4	158,719	149,675	+6.0	11.4	10.8	738,187	687,180	+7.4
AUDI	5.3	5.6	69,477	73,726	-5.8	5.3	5.5	340,346	353,671	-3.8
SKODA	3.6	3.6	47,111	47,943	-1.7	3.6	3.4	229,987	214,403	+7.3
SEAT	3.1	2.5	40,852	32,520	+25.6	3.0	2.5	192,178	160,612	+19.7
PORSCHE	0.6	0.6	7,809	7,309	+6.8	0.5	0.5	34,431	32,070	+7.4
OTHERS ³	0.0	0.0	345	404	-14.6	0.0	0.0	1,883	2,121	-11.2
PSA Group	16.2	10.5	211,990	137,439	+54.2	16.5	10.4	1,069,904	662,587	+61.5
PEUGEOT	6.3	6.1	82,490	80,631	+2.3	6.5	6.1	422,218	389,371	+8.4
OPEL/VAUXHALL ⁴	5.7	0.0	74,495			5.7	0.0	369,676		
CITROEN	3.8	4.0	50,522	52,999	-4.7	4.0	4.0	257,303	252,912	+1.7
DS	0.3	0.3	4,483	3,809	+17.7	0.3	0.3	20,707	20,304	+2.0
RENAULT Group	10.9	10.4	142,770	136,642	+4.5	9.9	9.7	642,457	621,158	+3.4
RENAULT	7.7	7.5	100,616	99,047	+1.6	7.1	7.2	457,348	460,144	-0.6
DACIA	3.2	2.8	41,721	37,364	+11.7	2.8	2.5	183,531	159,906	+14.8
LADA	0.0	0.0	243	231	+5.2	0.0	0.0	1,170	1,108	+5.6
ALPINE	0.0	0.0	190	0		0.0	0.0	408	0	
FCA Group	8.0	8.0	104,726	105,668	-0.9	7.3	7.6	470,811	484,039	-2.7
FIAT	5.5	6.3	72,643	83,017	-12.5	5.1	5.8	332,355	369,126	-10.0
JEEP	1.3	0.7	17,511	8,555	+104.7	1.1	0.7	70,659	41,584	+69.9
ALFA ROMEO	0.7	0.6	8,858	7,924	+11.8	0.6	0.6	40,507	36,002	+12.5
LANCIA/CHRYSLER	0.4	0.4	5,068	5,318	-4.7	0.4	0.5	23,221	32,666	-28.9
OTHERS ⁵	0.0	0.1	646	854	-24.4	0.1	0.1	4,069	4,661	-12.7
FORD	6.2	6.3	81,765	82,347	-0.7	6.7	7.0	434,146	444,788	-2.4
BMW Group	6.2	6.6	81,048	86,380	-6.2	6.4	6.6	414,425	423,670	-2.2
BMW	4.8	5.2	62,631	68,017	-7.9	5.1	5.3	326,820	339,149	-3.6
MINI	1.4	1.4	18,417	18,363	+0.3	1.4	1.3	87,605	84,521	+3.6
DAIMLER	6.3	6.6	82,034	87,261	-6.0	6.2	6.4	400,752	406,750	-1.5
MERCEDES	5.5	5.9	72,750	77,778	-6.5	5.6	5.7	359,685	363,790	-1.1
SMART	0.7	0.7	9,284	9,483	-2.1	0.6	0.7	41,067	42,960	-4.4
TOYOTA Group	4.3	4.2	56,512	55,267	+2.3	4.5	4.4	291,615	282,572	+3.2
TOYOTA	4.0	4.0	53,057	52,310	+1.4	4.2	4.2	273,996	266,488	+2.8
LEXUS	0.3	0.2	3,455	2,957	+16.8	0.3	0.3	17,619	16,084	+9.5
NISSAN	2.8	3.4	37,291	44,525	-16.2	3.4	3.9	220,265	246,376	-10.6
HYUNDAI	3.1	3.1	41,322	40,981	+0.8	3.2	3.0	208,266	194,096	+7.3
KIA	2.8	2.7	37,182	35,884	+3.6	2.9	2.9	190,340	183,362	+3.8
VOLVO CAR CORP.	1.9	1.9	24,518	25,053	-2.1	2.0	1.9	126,237	123,851	+1.9
JAGUAR LAND ROVER Group	1.3	1.2	16,732	15,636	+7.0	1.4	1.6	91,873	101,885	-9.8
LAND ROVER	0.8	0.8	10,236	10,563	-3.1	0.9	1.1	58,622	68,611	-14.6
JAGUAR	0.5	0.4	6,496	5,073	+28.1	0.5	0.5	33,251	33,274	-0.1
HONDA	0.7	0.7	9,703	9,436	+2.8	0.9	0.9	58,634	57,537	+1.9
GM⁴	0.0	6.0	130	79,365	-99.8	0.0	6.3	1,145	401,000	-99.7

SOURCE: ACEA MEMBERS

¹ Includes data for ACEA members

² ACEA estimation based on total by market

³ Includes Bentley, Lamborghini and Bugatti

⁴ Following PSA acquisition of the Opel and Vauxhall brands, as of 1 August 2017 Opel/Vauxhall registrations are accounted in the PSA Group

⁵ Includes Dodge and Maserati